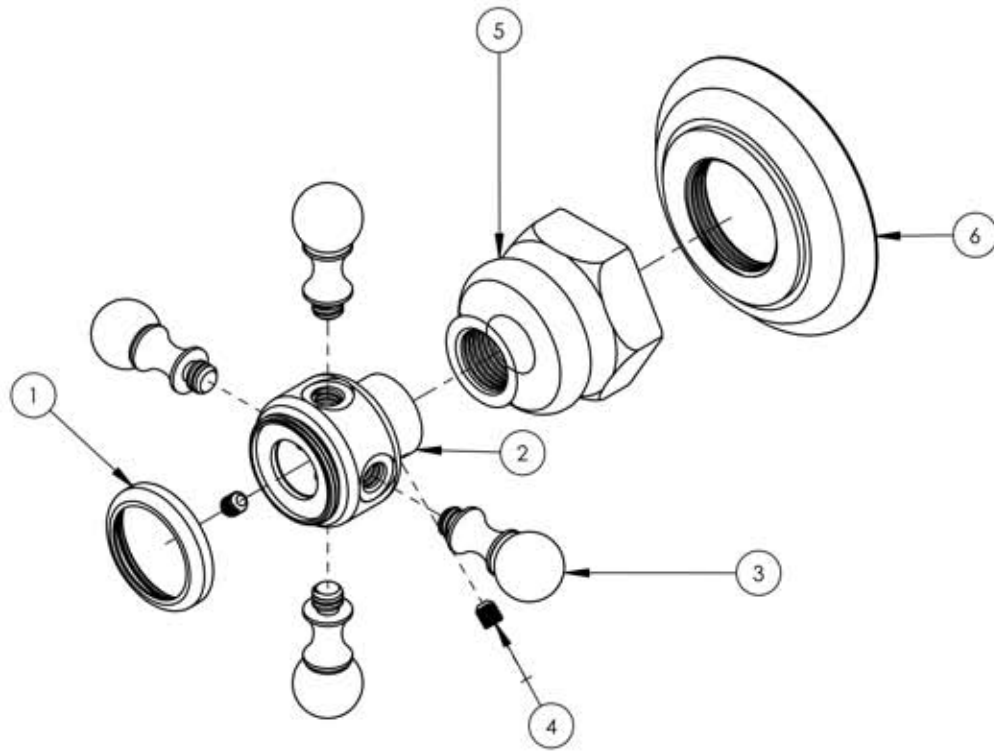


ITEM NO.	PART NUMBER	DESCRIPTION	QTY.
1	10538/00	CAP RING FOR 500 SERIES BUTTON	1
2	10622/00	HUB FOR HANDLE, CROSS	1
3	10623/00	HANDLE FINIAL CROSS	4
4	92008	SET SCREW, POINT 8CUP -32UNC 3/16"L	2
5	10621/00	BASE HUB NUT	1
6	10619/00	ESCUTCHEON, TRADITIONAL LAV 1"-20	1
7	11097	PLASTIC BUTTON, BLANK	1



ZONE	REV.	DESCRIPTION	DATE	APPROVED
REVISIONS				
1261 LOGAN AVENUE COSTA MESA, CALIFORNIA 92626 PHONE: 714.361.4800 FAX: 714.617.3120		PHYLTRICH®	PROPRIETARY AND CONFIDENTIAL <small>THE INFORMATION CONTAINED IN THIS DRAWING IS THE SOLE PROPERTY OF RSS MANUFACTURING. ANY REPRODUCTION IN PART OR AS A WHOLE WITHOUT THE WRITTEN PERMISSION OF RSS MANUFACTURING IS PROHIBITED.</small>	
Defining Luxury Since 1959				

-	-	INTERPRET GEOMETRIC DIMENSIONING & TOLERANCING IN ACCORDANCE WITH ASME Y14.5-2009 & ASME Y14.41-2003 STANDARDS. UNLESS OTHERWISE SPECIFIED, DIMENSIONS ARE IN INCHES. TOLERANCES ARE:		
NEXT ASSY	USED ON	FRACTIONS ±1/64"	DECIMALS X.X: ±.1 X.XX: ±.01 X.XXX: ±.005	ANGULAR ±.5°
APPLICATION		MATERIAL	NAME	DATE
FINISH		DRAWN	CA	10/31/2013
DO NOT SCALE DRAWING		CHECKED		

VOLUME CONTROL / DIVERTER TRIM, CROSS HANDLE, HEX TRADITIONAL SERIES			
SIZE	ASM/PRT NO.	REV	
A	500-35/00		
SCALE: 1:1.5	WEIGHT: lbs.	SHEET 1 OF 2	

5

4

3

2

1